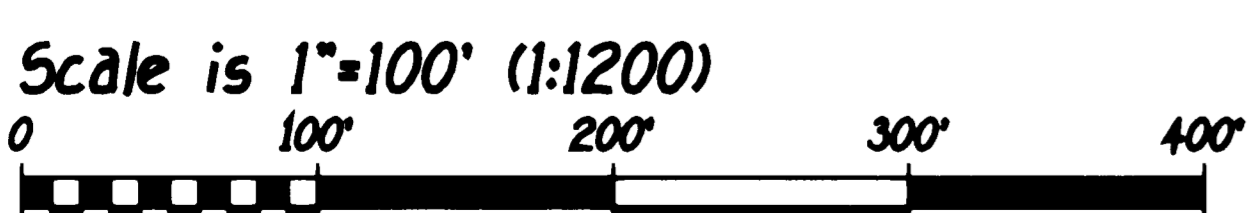
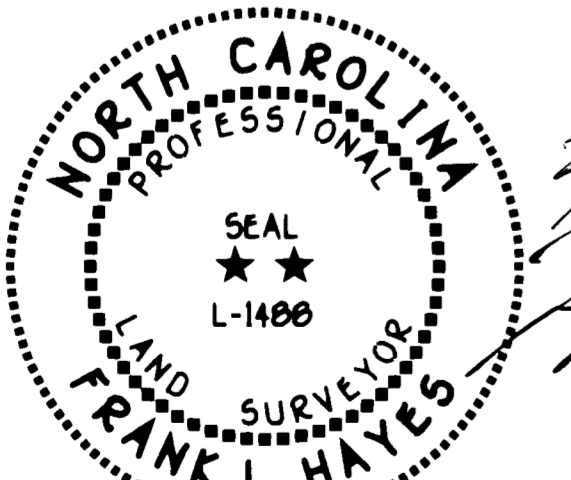
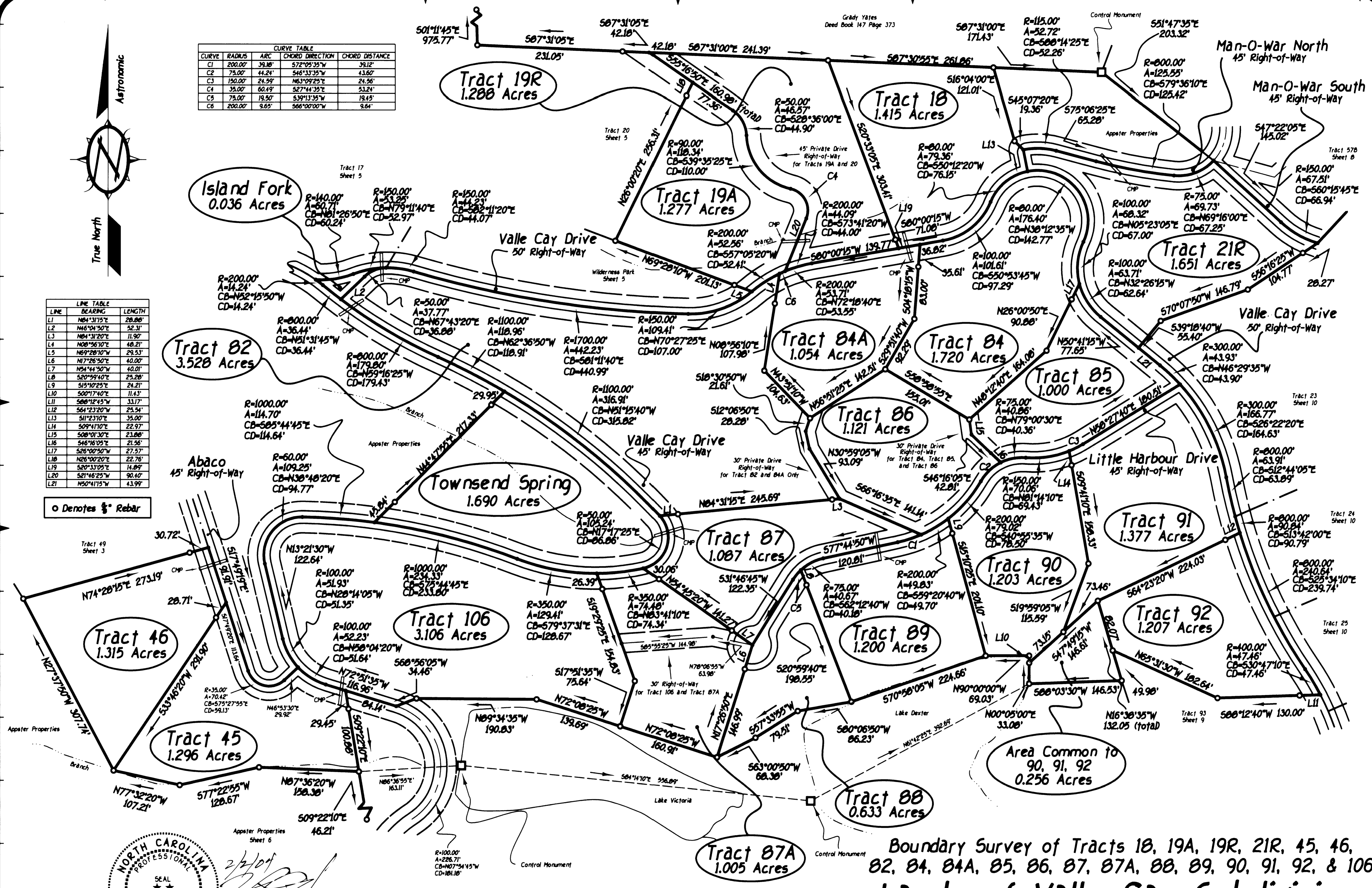


CURVE	RADIUS	ARC	CHORD	DIRECTION	CHORD DISTANCE
C1	200.00'	39.18'	572°09'35"W		39.12'
C2	75.00'	44.24'	546°33'35"W		43.60'
C3	150.00'	24.59'	N63°09'23"E		24.56'
C4	35.00'	60.49'	S27°44'35"E		53.24'
C5	75.00'	19.50'	S39°13'35"W		19.45'
C6	200.00'	9.65'	S66°00'00"W		9.64'

LINE	BEARING	LENGTH
L1	N04°31'15"E	20.00'
L2	N46°04'50"E	52.31'
L3	N04°31'20"E	11.90'
L4	N00°56'10"E	48.21'
L5	N69°20'10"W	29.53'
L6	N17°26'50"E	40.00'
L7	N54°44'50"W	40.01'
L8	S20°59'40"E	25.20'
L9	S19°10'25"E	24.21'
L10	S00°17'40"E	11.43'
L11	S60°12'45"W	33.17'
L12	S61°23'20"W	25.54'
L13	S11°23'10"E	35.00'
L14	S09°41'10"E	22.97'
L15	S08°01'30"E	23.88'
L16	S46°16'05"E	21.56'
L17	S26°10'50"W	27.57'
L18	N26°10'50"E	22.76'
L19	S00°13'05"E	14.89'
L20	S01°46'25"W	30.40'
L21	N50°41'15"W	43.99'



Boundary Survey of Tracts 18, 19A, 19R, 21R, 45, 46, 82, 84, 84A, 85, 86, 87, 87A, 88, 89, 90, 91, 92, & 106
Lands of Valle Cay Subdivision and Others

A Development by Appster Properties
 Watauga Township - Watauga County
 North Carolina
 February 2, 2004
 Sheet Seven of Twelve

20040615000081170 PLAT
 BK:P17 Pg:387
 06/15/2004 11:07:58AM 7/12